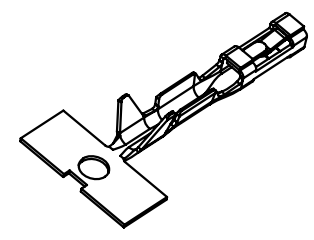
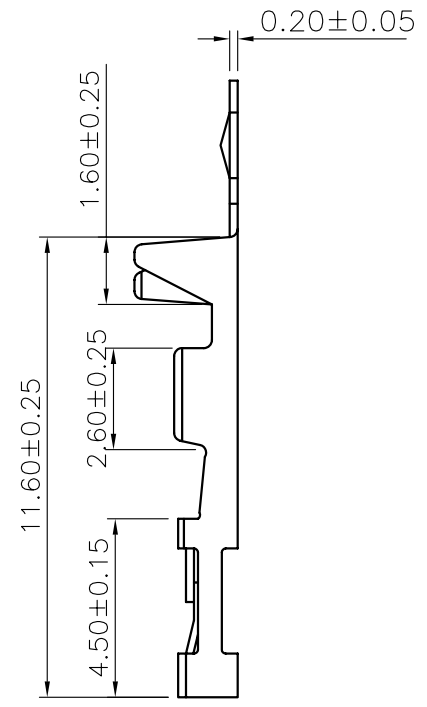
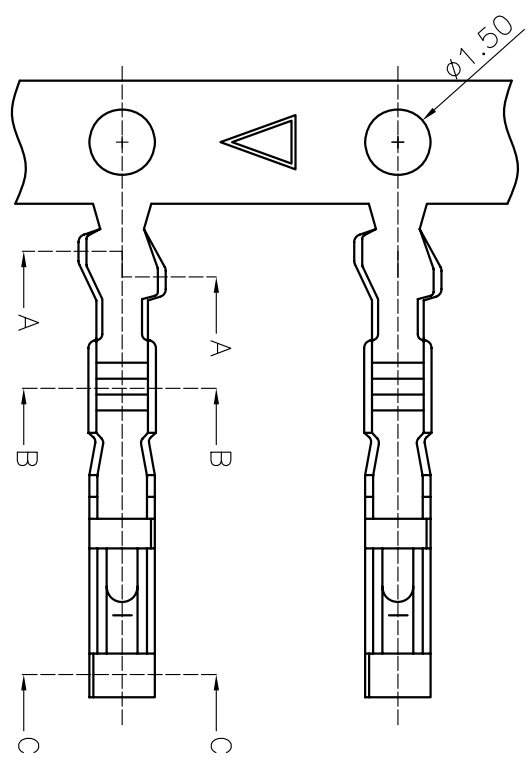


1 2 3 4 5

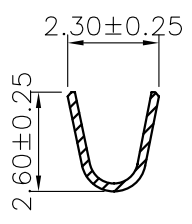
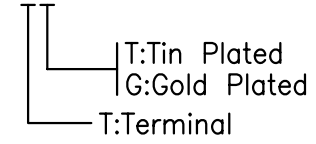


Specifications:

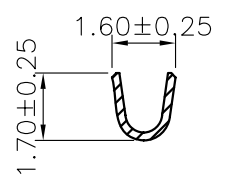
Current Rating:3.0A AC/DC
 Voltage Rating:250V AC/DC
 Contact Resistance:20m ohm. max.
 Withstanding Voltage:800V AC/minute
 Operating Temperature Range:-25°C~+85°C
 Application Wires:AWG #22 to #28
 Insulation O.D:1.7mm(Max)
 Mates With 2226A/B Series Housing
 Material and Finish
 Contact:Brass
 Finish:Gold Plated
 Packing:10,000pcs/Reel

How To Order

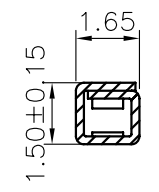
2226TX



Section:A-A



Section:B-B



Section:C-C

RoHS Compliant

F				DRAWN:	
E				Allen	
D				CHECKED:	
C				Jerry Chen	
B				APPROVAL:	
A	08-APR-2013		Allen	Mike Wu	
REV.	DATE	FILE	BY		

GENERAL TOLERANCE:	.X=±0.2 .XX=±0.15
UNIT:	MM
SCALE:	1:1
SHEET:	1/1
PROJECTION:	

<p>繼德工業股份有限公司 Neltron Industrial Co., Ltd.</p>	DESCRIPTION:	2.54mm Wire To Board Crimp Terminal
	PART NO:	2226TX

SIZE	A4
------	-----------